



# ***Back Beat Bass***

***from Jazz to Rockabilly***

© 2013 Hans Adamson, © 2013 Hans Adamson. All rights reserved. Art Vista is a trademark of Art Vista Productions. No part of the Licensed Material (as this term is hereinafter defined) may be reproduced or transmitted in any form or by any means for any purpose except as described in the End User License Agreement.

## **END USER LICENSE AGREEMENT**

The following information represents the contractual conditions for the use by you, the final user (hereinafter, sometimes referred to as the "Licensee") of the Art Vista Productions Licensed Material.

By installing the Licensed Material on your computer, or by registration, or by downloading the Licensed Material, you are declaring yourself to be in agreement with the contractual conditions, so please read the following text carefully. If you are not in agreement with these conditions, you must not install or download the Licensed Material.

1. **Object of the Contract.** The object of the contract consists of the audio recordings included in the downloads, the audio recordings on the supplied CD(s) or DVD(s), as applicable, original programming utilized in the product (including, but not limited to, custom scripting), and photographs, graphics, and other images and editorial material, (including, but not limited to, the relevant usage instructions). These are described hereinafter as "Licensed Material," whether consisting of audio recordings, custom scripting, visual artwork, or editorial material, or any other material subject to copyright or patent protection.

2. **Scope of Use.** Art Vista Productions grants the Licensee, for the duration of this contract, the nonexclusive, nontransferable license to use the Licensed Material within musical compositions. Licensee may use the Licensed Material within musical compositions on a commercial and non-commercial basis without paying an additional license fee or providing source attribution to Art Vista Productions. This license expressly forbids resale, lease or lending or other distribution of the Licensed Material, or any protected elements thereof, either as it exists on these discs, in the downloads, or within any modifications thereof. You may not place the Licensed Material in a

computer/sampler network to be accessed by multiple users unless you have acquired a license for each separate computer having access to the Licensed Material. This license permits only your personal use of the Licensed Material on up to two (2) separate computers, which computers shall be owned and used by you exclusively. If you need more, special arrangements may be made on a case-by-case basis. Licensee may not record any of the samples comprising the Licensed Material for use by themselves in a soloed or layered, single-note, or, non-melodic context in a music library, sound effects library, sample library, or virtual instrument. Licensee must take all reasonable steps necessary to protect the Licensed Material from distribution to third parties in violation of copyright laws and other laws protecting intellectual property.

3. **Art Vista Productions' Rights over the Licensed Material; Watermarking Policy.** The Licensed Material product is protected by copyright laws and international copyright treaties, as well as other intellectual property laws and treaties. The audio recordings, original software programming, photographs, graphics, and other images and editorial material comprising the Licensed Material and the copyright and all other intellectual property rights thereto remain the property of Hans Adamson and Art Vista Productions. We put a lot of time and effort in our products and strive to keep the prices low. In order to continue making products and servicing you, we must be able to get a fair return on our efforts and must therefore enforce our copyright and other rights against any form of piracy or other violation of our rights. Please note that the Licensed Material is for your use only and is not to be shared. Our products are imbedded with a digital watermark specific to the serial number given you at time of purchase and means that the source of any unlawful distribution can be traced.

4. **Return Policy.** Please understand that all download sales are final and no refunds will be issued once a download transaction has begun. For all other purchases from the Art Vista Productions website, if you are able to return the product in the same condition you have received it within 14 calendar days from the date of product arrival and you have not activated the serial number, if any, the license fee you paid may be refunded to you, less shipping and handling costs.

5. **Limited Warranty/Limitation of Liability.**

**TO THE MAXIMUM EXTENT PERMITTED BY APPLICABLE LAW, ART VISTA PRODUCTIONS DISCLAIMS ALL WARRANTIES AND CONDITIONS, EITHER EXPRESS OR IMPLIED, INCLUDING, BUT NOT LIMITED TO, IMPLIED WARRANTIES OF MERCHANTABILITY, FITNESS FOR A PARTICULAR PURPOSE, WARRANTIES OF SATISFACTORY QUALITY, TITLE, AND NON-INFRINGEMENT, WITH REGARD TO THE LICENSED MATERIAL. TO THE MAXIMUM EXTENT PERMITTED BY LAW, NEITHER ART VISTA PRODUCTIONS, ITS SUPPLIERS, DEALERS, DISTRIBUTORS, NOR THE AGENTS OR EMPLOYEES OF THE FOREGOING WILL BE LIABLE FOR ANY INDIRECT, CONSEQUENTIAL, SPECIAL OR INCIDENTAL DAMAGES OF ANY SORT, (INCLUDING, WITHOUT LIMITATION, DAMAGES FOR LOST PROFITS, BUSINESS INTERRUPTION OR LOSS OF DATA ARISING OUT OF THE USE OF THE LICENSED MATERIAL) WHETHER OR NOT SAME HAVE BEEN NOTIFIED OF THE POSSIBILITY OF SUCH DAMAGES, OR OF ANY CLAIM BY ANY OTHER PARTY.**

6. **General Terms.**

(a) All rights not expressly granted to Licensee hereunder are reserved by Art Vista Productions.

(b) This license is effective until terminated. Failure to comply with any provisions of this license will result in automatic termination of this license and may result in legal action. Upon termination, Licensee agrees to destroy all copies of the Licensed Material in Licensee's possession. In the event of termination, the following sections of this license will survive: 3, 5, and 6.

(c) This license shall be governed by California law applicable to contracts fully negotiated, executed and performed therein. Only the California courts (state and federal) shall have jurisdiction over controversies regarding this license; any proceeding involving such a controversy shall be brought in those courts, in Los Angeles County, and not elsewhere.

(d) You agree that this license contains the complete agreement between the parties hereto, and supersedes all other communication, relating to the subject matter of the license.

(e) You acknowledge that you have read this license and understand it and agree to be bound by its terms and conditions.

## User Manual

Play **Art Vista Back Beat Bass** from a midi keyboard, and it will sound just like an upright bass player playing the real instrument. Thanks to intelligent scripting, Back Beat Bass performs styles from rockabilly to jazz just the way a real bass player would, automatically moving between neck positions depending on playing style. The automatic playback control can also be overridden by the user through keyboard switches and continuous controllers, if so desired.

### Quick Start

- **Select your midi keyboard** controller for a calibrated playback response.
- **“Bop Factor”** controls how the instrument is played depending on style. For a jazzier style, move the knob towards “jazz” and for a more basic style, move the knob towards “rockabilly.” A setting all the way to the left will trigger special “rockabilly” samples and the green indicator lamp will light up. (See #10, #11 and #15 below.)
- **Short slide notes** are triggered at two different speeds by higher velocities. This setting can be changed to key-switching. (See #7, #16, #17 and #18 below.)
- **Long slides** can be triggered either by midi CC, selectable by the user, or by specific user-assigned keys. (See #27, #28 and #29 below.)
- **Ghost Notes** are mapped to D#0 (middle C = C3) and match neck position (automatic or manual) and string.
- **Body Taps** are mapped to D4, E4, F4, and G4 (middle C = C3).
- **Bow Direction** is automatic, but can be overridden by key-switches.
- **Set the limiter** to your taste. It can also be switched off.
- **Instrument presets** provide a variety of pre-configured EQ settings.
- **All automation can be user configured** and allow key-switching, semi-automation, as well as tweaking of parameters that control playback. Please see the Interface Controls descriptions below.
- **Reset** default presets that have been changed by clicking the “reset” button. Individual parameters can be reset to default value by holding “Ctrl” and clicking on the interface parameter.

## Interface Controls – Main View



1. **Keyboard Velocity Response Presets** - selects keyboard brand and/or model for a calibrated touch. Also makes it possible to maintain the same touch and feel of the instrument when switching midi keyboards.
2. **Instrument Presets** - provides a variety of different EQ settings.
3. **Three-band Parametric Equalizer with On/Off Switch** - sets the amount of cut or boost. To change active frequency, see “Settings View” below.
4. **Limiter with On/Off switch** - increases perceived loudness and “punch” by compressing the playback.
5. **Bowing** - enables bowing, and the display screen shows the bow’s current direction. Bowing and bow direction may also be controlled by key-switches. (See “Default Key-switches” below.)
6. **Auto Position** - automatically selects neck position depending on playing parameters. Auto position may be overridden by mod wheel, if CC1 is set to control neck position. (See #15 below.)
7. **Short Slides** - half-note slides will play at higher velocities when enabled. The knob controls the velocity break-point between regular plucked notes and half-note slides. The short slides may also be set to play only if the sustain pedal is depressed. (See also #16, #17 and #18 below.)
8. **Swing** - enables automatic playback of rockabilly slaps when the “Bop Factor” is in the “rockabilly” position (green lamp) and the dedicated slap key D#0 is held (middle C = C3). The tempo of the first automatic slap is determined by the time lapsed between depressing D#0 and the following note. Thereafter, the automatic slaps are continuously adjusted to the

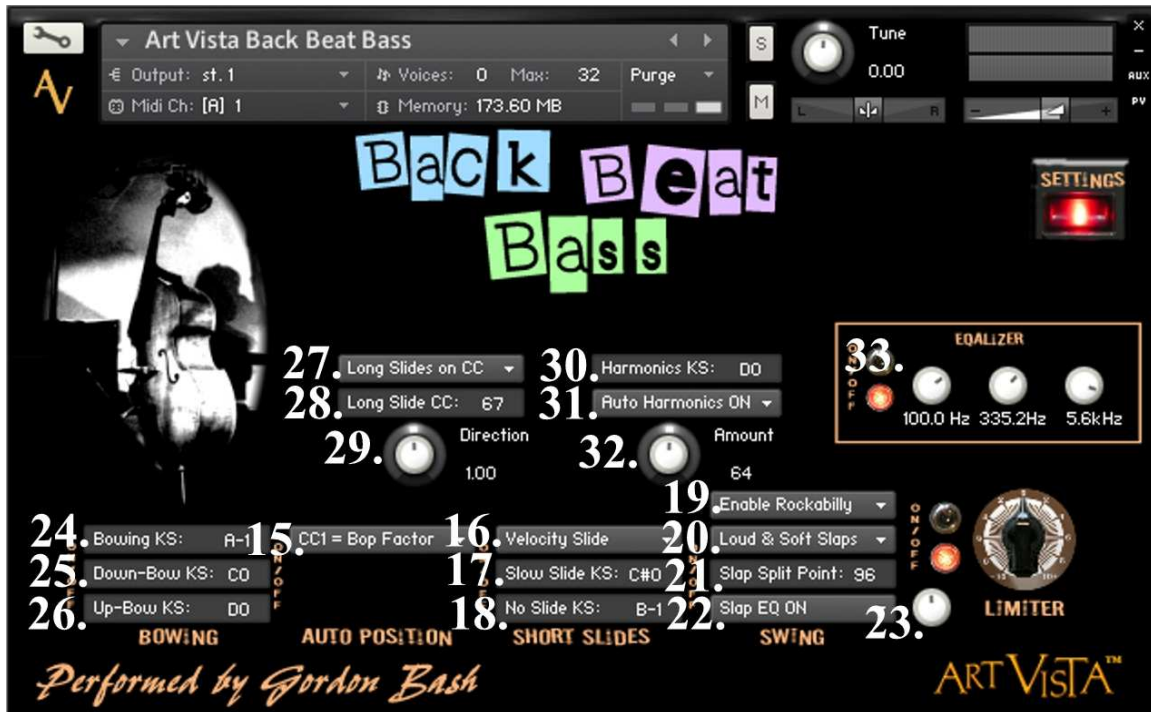
playing tempo. The knob controls the swing factor of the automated rockabilly slaps. If disabled, the rockabilly slaps may be triggered manually by playing D#0. (See also #10, #19, and #20 below.)

9. **Detail On/Off Switch** - switching to “off” will result in less high frequency detail.
10. **Bop Factor** - changes the instrument’s playback to suit styles ranging from rockabilly to jazz and may be controlled by mod wheel. (See #15 below.) When turned all the way left, special “rockabilly” samples are played. Automatic slapping plays back if “Swing” is switched on. (See #8 above, #19 and #20 below.)



11. **Selector for Neck Position** - sets “mod wheel” or “position 1 only” when “Auto Position” is disabled.
12. **Key Selector for Short Slides** - selects the key-switch for half-note slides when automatic velocity triggering is disabled. (See also #16.)
13. **Reset button** - resets factory settings for the preset you are currently using. Individual parameters can be reset to default value by holding “Ctrl” and clicking on the interface control.
14. **Settings** - toggles between the interface’s “Main View” and the “Settings View”.

## Interface Controls – Settings View



15. **Mod Wheel Selector** - selects “Bop Factor” or neck position to be controlled by the mod wheel (CC1).
16. **Slide Note Control Selector** - selects whether only velocity, or velocity in combination with sustain pedal will control the short slide triggering.
17. **Slow Slide Key-switch** - selects the key-switch for triggering slow short slides.
18. **No Slide Key-switch** - selects the key-switch for preventing short slide triggering by velocity.
19. **Enable Rockabilly** - enables special rockabilly samples to be triggered when the “Bop Factor” is at its lowest value. (See also #8, #10, and #20.)
20. **Loud & Soft Slaps** - selects whether Rockabilly mode will play loud or soft slapping, or if loud and soft slaps will be velocity switched.
21. **Slap Split Point** - sets the split point between soft and loud samples in “rockabilly” mode. (See also #8, #10, and #19.)
22. **Slap EQ ON/OFF** - enables EQ for the rockabilly plucks and slaps.
23. **EQ Control knob** - cuts or boosts slap EQ frequencies.
24. **Bowling Key-switch** - enables bowing with automatic up- and down-bows. Legato playing will trigger notes played on the same bow-stroke.
25. **Down-bow Key-switch** - selects key-switch to override automatic bow direction and force down-bow.
26. **Up-bow Key-switch** - selects key-switch to override automatic bow direction and force up-bow.



27. **Long Slides on CC** - selects whether long slides will be triggered by continuous controller or by keys. When "on key" is selected, individual keys may be selected for up- and down-slides.
28. **Long Slide CC** - sets the CC# for triggering long slides.
29. **Direction** - controls the balance of up- and down-slides when triggered by CC. A lower value results in more upwards slides, while a higher value will render more down-slides. A "0" value will result in only up-slides.
30. **Harmonics Key-switch** - selects the key-switch for natural harmonics.
31. **Auto Harmonics ON** - switches automatic playback of harmonics on/off.
32. **Amount** - sets how often harmonics will be played when Auto Harmonics is ON. (See #29.)
33. **Parametric EQ Frequencies** - sets the center frequencies for the three parametric EQ controls.

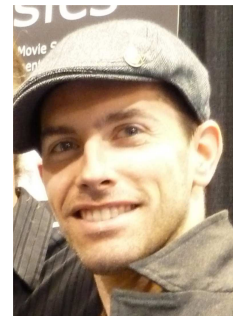
Default Key-switches (middle C = C3):

- **A-1** - Bowing
- **C0** - Down-bow
- **D0** - Up-bow
- **D0** - Harmonics
- **A#-1** - Short Slide
- **B-1** - No Short Slide
- **C#0** - Slow Short Slide

Keyboard sample mapping (middle C = C3):

- **E0-A#3** - Plucked and Bowed Notes
- **D#0** - Ghost Notes
- **D#0** - Rockabilly Slaps (if rockabilly is enabled)
- **B-1** - Long Slides Up (if key playback is enabled)
- **C4** - Long Slides Down (if key triggering is enabled)
- **D4** - Low Body Taps
- **E4** - Middle Body Taps
- **F4** - High Body Taps
- **G4** - High Body taps

Art Vista Back Beat Bass was performed by Los Angeles session player Gordon Bash, who is also known as a founding member of the group Magnolia Memoir.



Gordon Bash